



REFRIGERATION SLIDE TOP BOTTLE COOLERS

MODEL: _____ PROJECT: _____ ITEM #: _____ QTY: _____

PRODUCT IMAGE



BC48-SS SHOWN

**AVAILABLE IN BLACK VINYL OR
STAINLESS STEEL FINISH**

OPTIONAL ACCESSORIES

- **BC-100** LED Interior Light Kit
- **BC-130** Four 1" Ultra Low profile casters with Brakes
- **BC-131** Six 1" Ultra Low profile casters with Brakes (72" and 96" models)
- **BC-132** Four 2" Low profile casters with Brakes
- **BC-133** Six 2" Low profile casters with Brakes (72" and 96" models)
- **BC-134** Four 3" casters with Brakes
- **BC-135** Six 3" casters with Brakes (72" and 96" models)
- **BC-111** Bottle Opener and Cap Catcher
- **BC-536** Additional Wire Partition
- **BC-619** Locks

STANDARD FEATURES

- **Electrical**
115 V, 1 Phase, 60 Hz. Furnished with 8'-0" plug-in cord, which exits left rear of cooler. NEMA 5-15P Plug Configuration. Dedicated 15 amp circuit recommended.
- **Refrigeration**
Self-contained 1/3 HP 134A Refrigerant. 30°F-40°F operating range
24" & 36" Units: Self-contained 1/5 HP 134A Refrigerant. 30°F-40°F operating range
- **Interior**
Interior Floor: 20 gauge stainless steel (all models)
Interior Walls: 20 gauge stainless steel (all models)
Partitions: Adjustable, chrome plated
- **Exterior**
BG Models - Front & Sides: 20 gauge black vinyl
All Models - Back: 20 gauge galvanized steel
SS Models - Front & Sides: 20 gauge stainless steel
- **Doors**
Heavy-Duty foamed-in-place with rugged grab bar handle and optional locks
- **Insulation**
2" thick foamed-in-place polyurethane
- **Plumbing**
No drain connection required.
Condensate evaporator pan included

** This equipment is intended for the storage and display of non-potentially-hazardous bottle or canned products only **



APPROVED BY:

CERTIFICATIONS:

Due to our commitment to continued product improvement, specifications are subject to change without notice.

Printed in the USA

Krowne Metal Corporation

100 Haul Rd. Wayne, NJ 07470 • Toll Free: (800) 631-0442 • Fax: (973) 872-1129
sales@krowne.com • www.krowne.com • www.facebook.com/KrowneMetal • www.twitter.com/KrowneMetal

Rev. 08/2015
No. 1.1

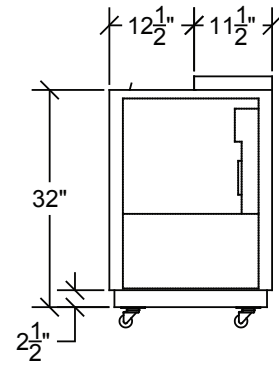
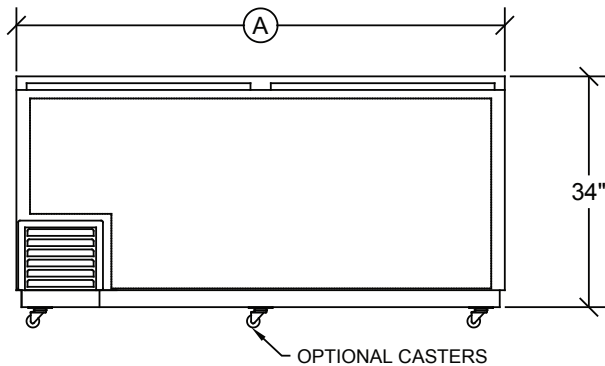
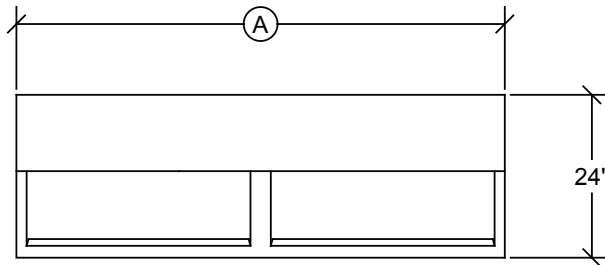
REFRIGERATION

SLIDE TOP BOTTLE COOLERS

MODEL: _____ PROJECT: _____ ITEM #: _____ QTY: _____

SLIDE TOP BOTTLE COOLERS

NOTE: Optional casters raise height 1" higher than wheel size



Model Numbers	Overall Length A	Doors	Exterior Finish (Front & Sides)	Interior Sides	Divider Racks	Case Capacity (12 oz. Bottles)	HP	Full Load Amps	Weight (lbs.)
BC24-BG	2'-0"	1	Black Vinyl	Stainless Steel	1	5	1/5	4.0	204
BC24-SS	2'-0"	1	Stainless Steel	Stainless Steel	1	5	1/5	4.0	204
BC36-BG	3'-0"	1	Black Vinyl	Stainless Steel	2	8	1/5	4.0	220
BC36-SS	3'-0"	1	Stainless Steel	Stainless Steel	2	8	1/5	4.0	220
BC48-BG	4'-0"	2	Black Vinyl	Stainless Steel	3	14 1/2	1/3	5.5	300
BC48-SS	4'-0"	2	Stainless Steel	Stainless Steel	3	14 1/2	1/3	5.5	300
BC72-BG	6'-0"	2	Black Vinyl	Stainless Steel	4	25 1/2	1/3	6.0	405
BC72-SS	6'-0"	2	Stainless Steel	Stainless Steel	4	25 1/2	1/3	6.0	405
BC96-BG	8'-0"	3	Black Vinyl	Stainless Steel	5	35 1/2	1/3	6.6	500
BC96-SS	8'-0"	3	Stainless Steel	Stainless Steel	5	35 1/2	1/3	6.6	500

NOTE: All units come with Stainless Steel Interior



APPROVED BY:

CERTIFICATIONS:

Due to our commitment to continued product improvement, specifications are subject to change without notice.